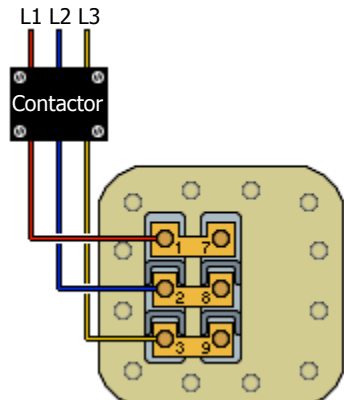
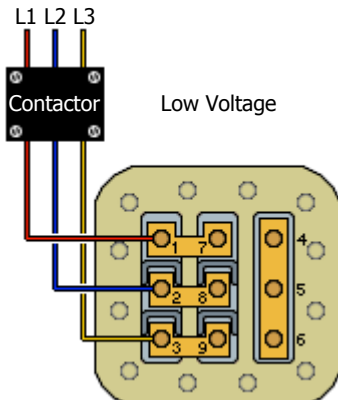


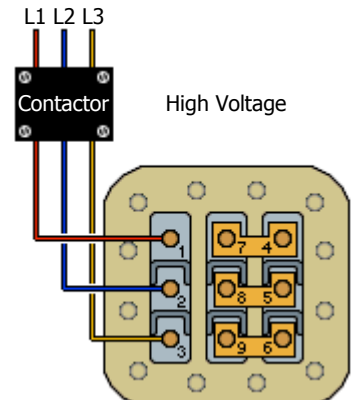
**Carrier/Carlyle
6L/06L Compressors
Motor Terminal Wiring Diagrams
Four and Six Cylinder Compressors**



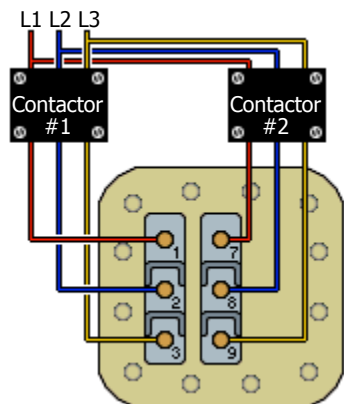
Six Lead Across the Line Start



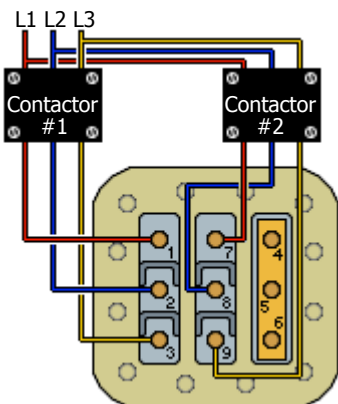
Nine Lead Across the Line Start



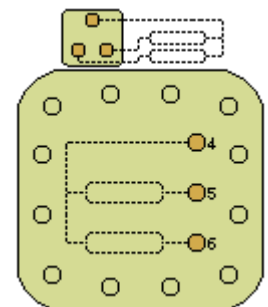
Nine Lead Across the Line Start



Six Lead Part Winding Start



Nine Lead Part Winding Start

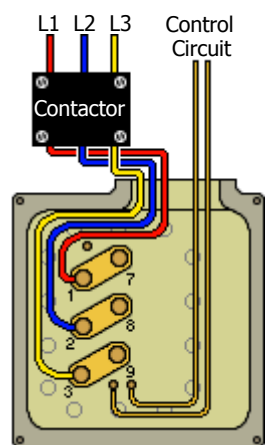


Internal Thermostat arrangement

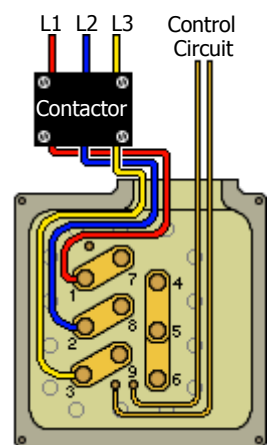
Some older model 06L compressors had internal motor thermostats attached to motor studs 4, 5, and 6. Connect control circuit to studs 5 - 6. If studs 5 - 6 lose continuity check for continuity between studs 4 - 5 and 4 - 6. Connect control circuit to pair that has continuity. Some models had a small terminal plate above the main terminals. Follow the same procedure for control circuit hook-up as outlined above.

**Carrier/Carlyle
6L/06L Compressors
Motor Terminal Wiring Diagrams**

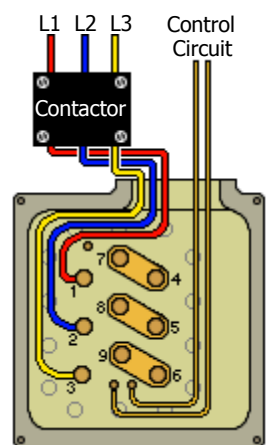
Eight, Ten and Twelve Cylinder Compressors



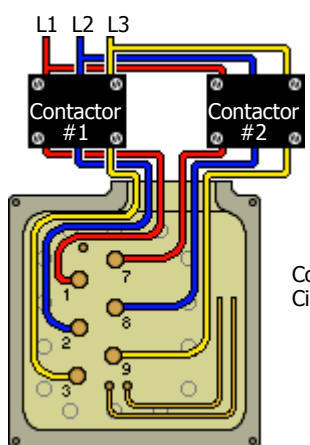
Six Lead Across the Line Start



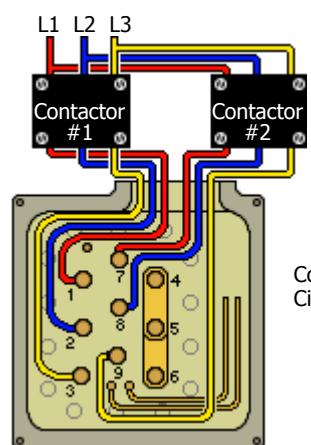
Nine Lead Across the Line Start
Low Voltage



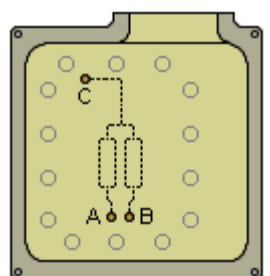
Nine Lead Across the Line Start
High Voltage



Six Lead Part Winding Start



Nine Lead Part Winding Start



Internal Thermostat arrangement

Control circuit should be attached to terminals A and B. If A and B lose continuity then check for continuity between terminals C and A or C and B. Connect control circuit to pair that has continuity.